



PTV Vision® Suite

PTV VISION PRICE LIST 2010

FOR THE AMERICAS* (U.S. DOLLARS)

The PTV Vision Suite is an integrated suite of transportation analysis tools. The prices on the first page refer to the Suite options. Individual prices (e.g., VISSIM) are listed in the following sections.

Ordering / Sales:
sales@ptvamerica.com
Phone: (866) 941-4588
(toll-free)

SMALL AA-Size

PTV Vision Suite AA2

VISUM S0
VISSIM V2

PTV Vision Suite AA3

VISUM S0
VISSIM V3

PTV Vision Suite AA4

VISUM S0
VISSIM V4

BASE A-Size

PTV Vision Suite A2

VISUM S1
VISSIM V2

PTV Vision Suite A3

VISUM S1
VISSIM V3

PTV Vision Suite A4

VISUM S1
VISSIM V4

MEDIUM B-Size

PTV Vision Suite B2

VISUM S2
VISSIM V2

PTV Vision Suite B3

VISUM S2
VISSIM V3

PTV Vision Suite B4

VISUM S2
VISSIM V4

LARGE C-Size

PTV Vision Suite C2

VISUM S3
VISSIM V2

PTV Vision Suite C3

VISUM S3
VISSIM V3

PTV Vision Suite C4

VISUM S3
VISSIM V4

X-LARGE D-Size

PTV Vision Suite D3

VISUM S4
VISSIM V3

PTV Vision Suite D4

VISUM S4
VISSIM V4

For optional modules refer to the specific product page.



traffic mobility logistics.

* VISSIM Dynamic Traffic Assignment only available with Suites.

* Individual software packages sold separately.

* Full product descriptions on following pages.

* Suites include single hardlock for VISUM and VISSIM.

PTV America, Inc., 9755 SW Barnes Rd.
Suite 550, Portland, OR 97225
Ph: 503-297-2556, Fax 503-297-2230
www.ptvamerica.com



VISSIM®

Features	VISSIM Levels				
	V1	V2	V3	V4	V5
Link Types	2	unlimited	unlimited	unlimited	unlimited
Signals - Fixed Time / Actuated	unlimited	unlimited	unlimited	unlimited	unlimited
Signals - VAP (user definable programming language)			20	20	unlimited
3D Networks, Vehicles, Objects		●	●	●	●
AVI Creation		●	●	●	●
Controller Testing			●	●	●
Application Programming Interfaces			●	●	●
Curbside / Parking Operations		●	●	●	●
Railroad Preemption			●	●	●
Managed Lanes			●	●	●
Transit Routes / Stops				●	●
Transit Signal Priority				●	●
3D Enhanced Package		○	○	●	●
VisVAP			○	○	○
Social Force Pedestrian		○	○	○	○
ASC/3 SIL	○	○	○	○	○
Dynamic Traffic Assignment		○	○	○	○
HCM Analysis ¹		○	○	○	○
NAVTEQ Networks ¹		○	○	○	○

- - feature is standard with version
 ○ - feature is optional and can be purchased separately with version

Optional Modules

- ASC/3™ Software In the Loop Controller²
- Visual VAP – Flow Chart/ Graphical Tool to Design Signal Control Logic
- 3D Enhanced Package (VISSIM 3D Modeler, Autodesk® 3D Studio Export)
- Social Force Pedestrian Package
 - 500 Pedestrians
 - 5,000 Pedestrians incl. Multi-story Support
 - 10,000 Pedestrians incl. Multi-story Support
 - 30,000 Pedestrians incl. Multi-story Support



traffic mobility logistics.

¹ Refer to Page 5.

² ASC/3™ is a licensed registered trademark of Econolite Control Products, Inc.



VISUM®

Features	VISUM Levels				
	S0	S1	S2	S3	S4
Suite Component	AA	A	B	C	D
Multimodal Networks	●	●	●	●	●
Highway Assignment	●	●	●	●	●
Transit Assignment	●	●	●	●	●
4-Stage Modeling	●	●	●	●	●
Interfaces	●	●	●	●	●
Flow Evaluations	●	●	●	●	●
Matrix Manipulation	●	●	●	●	●
HCM Analysis	●	●	●	●	●
NAVTEQ Tile Weight Points	-	3	5	8	10
Zones	100	400	800	3,000	5,000
Nodes	2,500	75,000	200,000	500,000	750,000
Links	6,000	150,000	400,000	1,000,000	3,000,000
Transit Line Time Profiles	200	1,000	5,000	10,000	40,000

Larger versions available upon request

Optional Modules

- VISTA Dynamic Traffic Assignment
- VISUM PuT Transit Operations
- VISEM Aggregate Tour-Based Demand Model
- VISEVA Demand Generation
- VISUM Information Server: Web Interface for VISUM
- Additional NAVTEQ Map Tile Weight Points (Refer to Page 8)
- VISUM Viewer
- TrueRoute
- TRAFFIX (Refer to Page 4)



traffic mobility logistics.

PTV America, Inc., 9755 SW Barnes Rd.
Suite 550, Portland, OR 97225
Ph: 503-297-2556, Fax 503-297-2230
www.ptvamerica.com



TRAFFIX Powered by VISUM

TRAFFIX 10

TRAFFIX SUITES

PTV Vision Suite T1

TRAFFIX
VISSIM V1

PTV Vision Suite T2

TRAFFIX
VISSIM V2

PTV Vision Suite T3

TRAFFIX
VISSIM V3

PTV Vision Suite T4

TRAFFIX
VISSIM V4

TRAFFIX PTV Vision Suite Add-on

TRAFFIX size limitations

- 100 Zones
- 2,500 Nodes
- 6,000 Links



traffic mobility logistics.

PTV America, Inc., 9755 SW Barnes Rd.
Suite 550, Portland, OR 97225
Ph: 503-297-2556, Fax 503-297-2230
www.ptvamerica.com



Additional Information

All LICENSES INCLUDE

- USB hardlock(s), local or network
- Electronic version of users manual.
- Hardcopy users manual (except academic licenses).
- Additional hardcopy of manual = \$125
- Free software updates for one year (two years for academic) from date of purchase or initial lease date.
- Ability to upgrade to higher level for the difference in purchase price. Requires current maintenance agreement.

HOTLINE

- Hotline technical support for one year from date of purchase or with current maintenance.¹
- For eligible users only at hotline@ptvamerica.com.

ADDITIONAL SUPPORT

- Annual User Group Meetings
- Web discussion board www.ptvamerica.com/bb
- Script sharing site www.ptvamerica.com/scripts

¹ Technical support is not a substitute for training. PTV America, Inc. reserves the right to direct customers from technical support to training when appropriate.

SHIPPING

- Standard 2-day air service included
- Overnight air service: \$100

MULTIPLE LICENSE DISCOUNT

- Applies to licenses purchased through single point of contact within an organization.
- Applies to licenses of the same level.
- 2nd license 30% discount
- 3rd license 40% discount
- 4th license and further licenses 50% discount
- Multiple license discounts do not apply to academic licenses.
- Add-on components may have different multiple license discounts, call for quote.

LEASES

- Six month fully functioning test lease available for 25% of purchase price.
- Requires \$300 refundable hardlock deposit.
- Applying lease to purchase:
 - Initial lease can be applied to purchase within one year of lease start;
 - Maintenance calculation based on lease start date if purchased;
 - Purchasing same level or higher than leased – full lease price is credited to purchase;
 - Purchasing lower level than leased – lease price of purchased level applies;
 - No lease suspensions or partial leases.

ACADEMIC LICENSES

- PTV Vision Suite C4 – Instructor license
- Five seats (network hardlock)
- Ten seats (network hardlock)
- Classroom instructional versions available upon request (if owner of instructor license).
- Does not include NAVTEQ tiles.
- Pedestrian Module (per seat)
- VisVAP

TUTORIALS

Price per copy

- VISUM Quickstart
- VISUM Basic Network
- VISUM PuT Network
- Using VISUM with Python
- Four step demand modeling with VISUM
- VISSIM Basic Network





Maintenance Agreements

STANDARD MAINTENANCE OPTION

- Cost: 15% per year based on the current purchase price of all licenses owned. Minimum of \$600. Academic licenses 15% every two years.

Includes:

- Software updates during the maintenance agreement term
- Unlimited technical support
- Annual NAVTEQ digital map update

PREMIUM MAINTENANCE OPTION

- Cost: Based on the current purchase price of all licenses owned per table below. For license values less than \$20,000 the additional maintenance price is \$1,000 per Premium Maintenance Ticket.

Includes:

- All Standard Maintenance benefits
- Choice of extended benefits based upon number of tickets

Premium Maintenance Tickets required for additional benefits

- 1 Ticket = Attendance at North American User Group Meeting, or
4 Persons eLearning, or Attendance at 1 PTV Scheduled Training
- 2 Tickets = 1 Day On-Site Visit PTV Support Person, or
Attendance at European User Group Meeting
- 4 Tickets = 2 Day Custom Training for up to 8 persons, or
2 Day On-Site Visit PTV Support Person

- User Group Meeting benefit includes registration, lodging, and airfare.

License Value Range		Maintenance Percentage/ Number of Tickets			
Min	Max	20%	25%	30%	35%
- < \$20,000 see note above					
\$20,000	\$39,999	1	2	3	4
\$40,000	\$64,999	2	4	6	8
\$65,000	\$89,999	3	6	9	12
\$90,000	\$114,999	4	8	12	16
\$115,000	\$139,999	5	10	15	20
\$140,000	\$164,999	6	12	18	24
\$165,000	\$189,999	7	14	21	28
\$190,000	\$214,999	8	16	24	32
\$215,000	\$239,999	9	18	27	36
\$240,000	\$264,999	10	20	30	40
\$265,000	\$289,999	11	22	33	44
\$290,000	\$314,999	12	24	36	48



traffic mobility logistics.

PTV America, Inc., 9755 SW Barnes Rd.
Suite 550, Portland, OR 97225
Ph: 503-297-2556, Fax 503-297-2230
www.ptvamerica.com



Training

2010 TRAINING PRICES PER PARTICIPANT

Course	Early	Standard
PTV Vision Suite	\$1,700	\$1,900
Introduction to VISSIM	\$950	\$1,050
Introduction to VISUM	\$950	\$1,050
VISSIM Advanced I – Signalized Control	\$500	\$600
VISSIM Advanced II – Specialized Applications	\$500	\$600
VISSIM Advanced III – Transit	\$500	\$600
VISSIM Advanced IV – COM	\$500	\$600
Dynamic Traffic Assignment	\$500	\$600
VISUM Advanced I – 4-Step & Transit Modeling	\$500	\$600
VISUM Advanced II – Scripting with Python	\$500	\$600
eLearning VISSIM Intro (per participant) see note below		\$350
The following courses are offered on a custom basis		
Introduction to Travel Demand Modeling		\$250

Early rate deadlines are posted on the PTV America, Inc. website and are generally one month in advance of the scheduled event.

Participants will be awarded 7 Professional Development Hours (PDH) per day for attending any PTV Vision training course. Successful completion of VISSIM eLearning is awarded 14 PDH. Participants will have an official record of attendance with PTV America.

Academic Discount - Any University or academic institution that owns the PTV Vision software may attend any classroom PTV Vision training course at a 50% discount of the early or standard rates at time of registration.

Prices for additional participants for eLearning from one organization as follow: \$300/ seat for 11-20 participants, \$250/seat for 21-30 participants, \$200/seat for more than 30 participants.

Custom Training - PTV America offers customized training for all PTV Vision Suite® software. Extra days may also be added to the training package for PTV America instructors to help your staff initiate your simulation or planning project. Contact PTV America for pricing and more information at training@ptvamerica.com.



traffic mobility logistics.

PTV America, Inc., 9755 SW Barnes Rd.
Suite 550, Portland, OR 97225
Ph: 503-297-2556, Fax 503-297-2230
www.ptvamerica.com

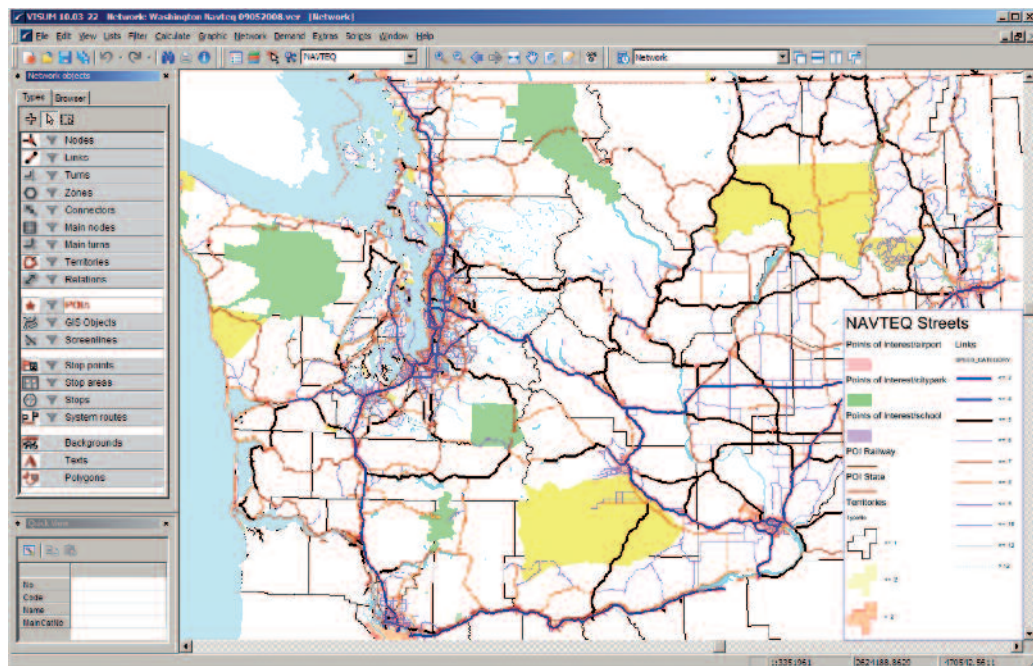


NAVTEQ DATA

NAVTEQ DATA FOR PTV VISION

PTV Vision's high quality and continually updated street network data is provided by NAVTEQ, the international leader in routable network data. NAVTEQ's data are the foundation of online mapping and routing services such as MapQuest® and Yahoo! Maps®. NAVTEQ networks are very detailed, including neighborhood streets, in every community in North America. PTV provides the data in "tiles", each of them including up to approximately 150,000 two-way links. The tile conventions including segmentation, projections, tile boundary conventions, and the tile weight point scheme are explained at www.ptvamerica.com/navteq_tiles.

After choosing a tile or group of tiles, users will want to select sub-networks from the total tile network. VISUM provides tools to cut out a sub-network from a tile, either by selecting different road classes or by subarea selection. The resulting subnetwork will be an accurate network data set for corridor studies and/or travel demand models, complete with capacities, turn restrictions, road names, and speeds.



traffic mobility logistics.

PTV America, Inc., 9755 SW Barnes Rd.
Suite 550, Portland, OR 97225
Ph: 503-297-2556, Fax 503-297-2230
www.ptvamerica.com